

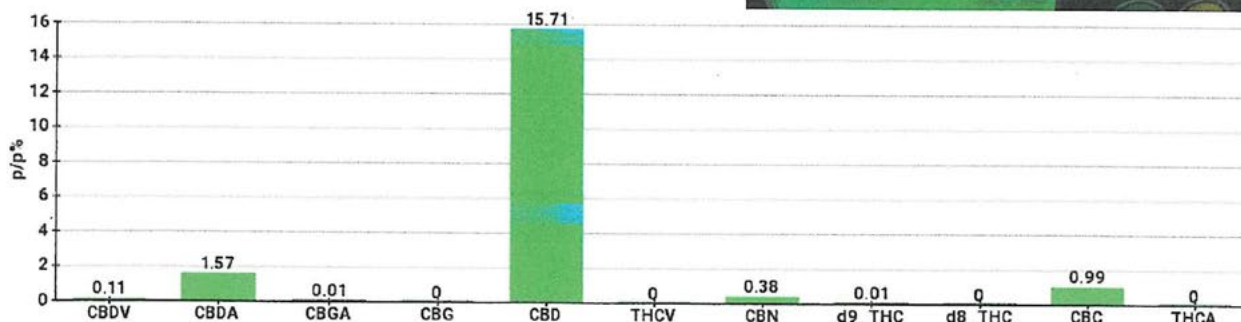
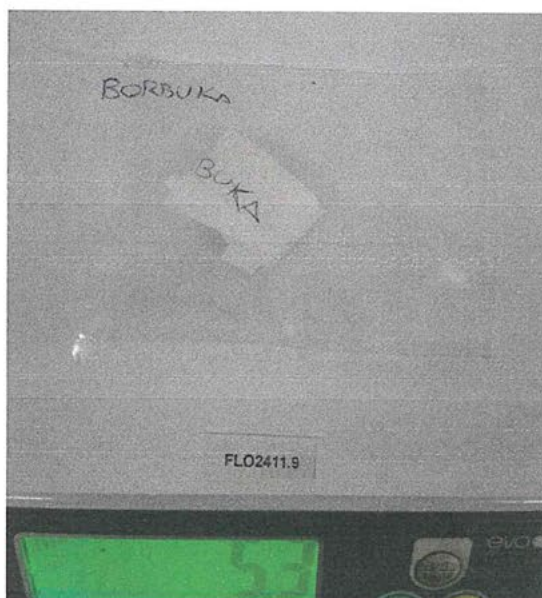


## TECHNICAL REPORT

<b>Committente</b>		<b>Etichetta</b>	Borbuka
<b>Data accettazione</b>		<b>Tipologia campione</b>	Infiorescenza
<b>Data analisi</b>	24/11/2020	<b>varietà</b>	Kompolti
<b>Codice riferimento interno</b>	FLO2411.9	<b>N. Cartellino</b>	H 17 096/0314
<b>Metodica analitica</b>	HPLC - HS - Rev.2	<b>Campionamento</b>	a cura del cliente
<b>Lotto</b>	H 17 096/0314		
<b>Note</b>			

Parametro	%p/p	Metodo
CBDV	0.11%	HPLC-UV
CBDA	1.57%	HPLC-UV
CBGA	<0.01%	HPLC-UV
CBG	<0.01%	HPLC-UV
CBD	15.71%	HPLC-UV
THCV	<0.01%	HPLC-UV
CBN	0.38%	HPLC-UV
d9_THC	<0.01%	HPLC-UV
d8_THC	<0.01%	HPLC-UV
CBC	0.99%	HPLC-UV
THCA	<0.01%	HPLC-UV
<b>CBD TOTALE</b>	<b>17.09%</b>	<b>CALCOLATO</b>
<b>CBG TOTALE</b>	<b>&lt;0.01%</b>	<b>CALCOLATO</b>
<b>THC TOTALE</b>	<b>&lt;0.01%</b>	<b>CALCOLATO</b>

CAMPIONE ANALIZZATO: Kompolti(0.00gr)



Pineto

25/11/2020